

# AGT-FD SERIES

## Ground Fault Measurement - Analog Output

AGT-FD Series ground fault sensors detect faults to earth from 0 mA to 100 mA and produce an output signal of 0–10 VDC in proportion to the amount of current passing to ground. The output is equal to the RMS value of the earth leakage. The AGT-FD can also be used to measure and monitor any low value AC circuit current by passing just one of the conductors through the sensing window.



### Ground Fault Sensor Applications

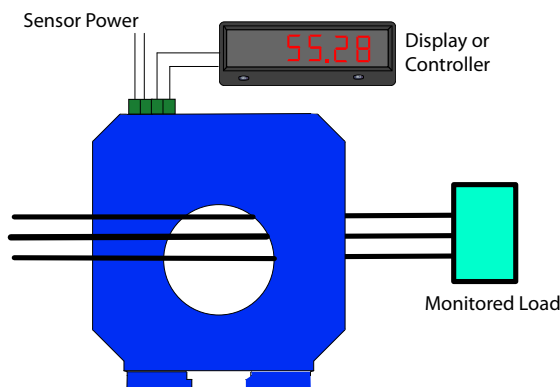
#### Current Leakage

- Monitor residual (earth leakage) current by passing all of the current carrying conductors through the sensing aperture.

#### Very Light Loads

- Monitor circuits of varying frequencies or distorted wave shapes, but very low current usage.

Display Shows Amount of Fault Current Present



### Ground Fault Sensor Features

#### Analog Output Signal

- 0–5 or 0–10 VDC proportional to 0–100 mA.
- Sensing window large enough to monitor 100 amp circuits.

#### Externally Powered

- Low power consumption (< 2 VA).
- 24 Volt AC or DC (20–30 V).

#### Factory Calibrated

- Warranted to stay accurate for five years minimum.
- Compatible with most PLCs, panel meters and other controllers.

#### Large Solid-core Case

- Large sensing window provides ample space for multiple conductors.

#### DIN Rail\* or Panel Mount

- Simple snap onto DIN rail.

#### UL, cUL Approved, CE Pending

- Accepted worldwide.

\*For information on the DIN rail accessories kit, see page 140.

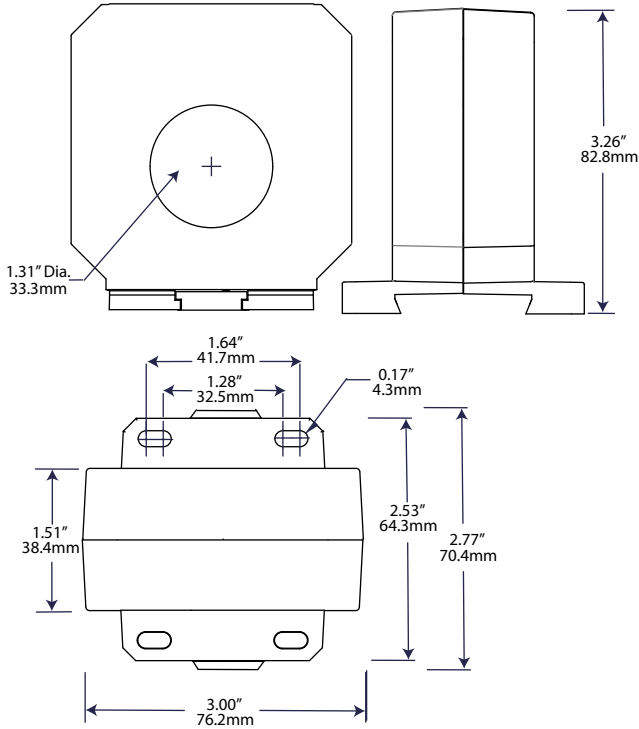
OEMs

Test & Evaluation Units for OEMs

Free program expedites evaluation process. See page 3 for details.

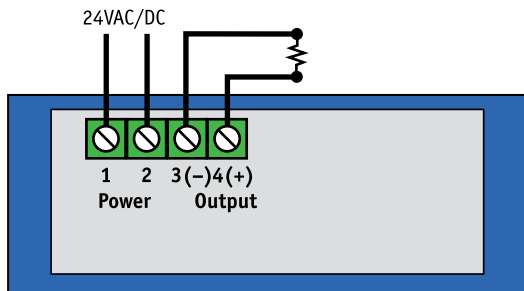


Ground Fault Sensor Dimensions



Ground Fault Protection

Ground Fault Sensor Connections



Ground Fault Sensor Specifications



<b>Power Supply</b>	24 VAC or DC (20–30 V)
<b>Power Consumption</b>	<2 VA
<b>Output</b>	0–5 VDC or 0–10 VDC
<b>Input Range</b>	0–100 mA
<b>Response Time</b>	250 ms (to 90% step change)
<b>Isolation Voltage</b>	UL listed to 1270 VAC, tested to 5 KV
<b>Frequency Range</b>	50–400 Hz
<b>Case</b>	UL94 V-0 Flammability Rated
<b>Environmental</b>	-4 to 122°F (-20 to 50°C) 0–95% RH, non-condensing
<b>Listings</b>	UL, cUL, CE pending

Ordering Information

Sample Model Number: AGT2-010-24U-FD  
Ground fault sensor, output 0–10 VDC proportional to AC current, 24 VAC/DC powered, DIN rail or panel mounted.



(1) Model	2	0–100 mA
(2) Output Type	005	0–5 VDC proportional to AC current
	010	0–10 VDC proportional to AC current
(3) Power Supply	24U	24 VAC or DC
(4) Case	FD	Solid-core, DIN rail or panel mounting