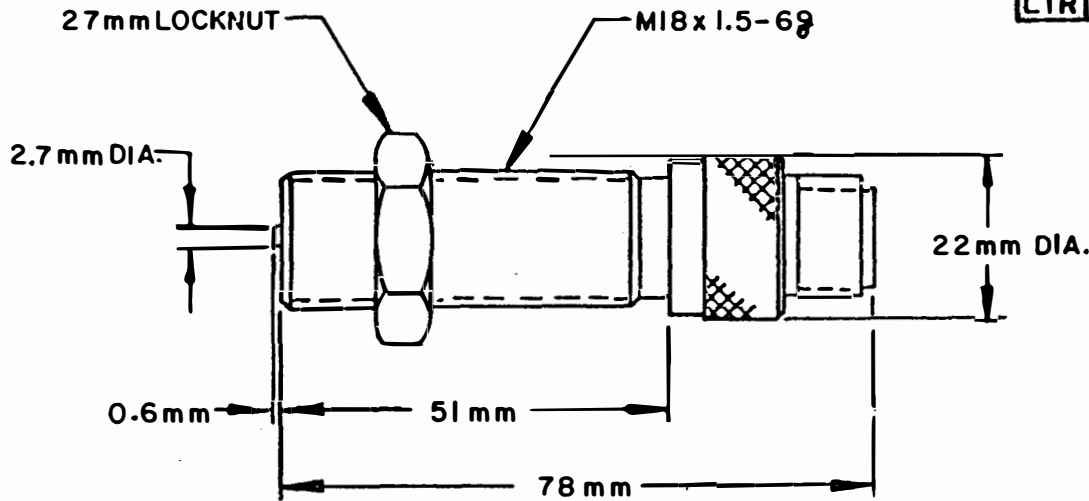


| REVISIONS |             |      |      |
|-----------|-------------|------|------|
| LTR       | DESCRIPTION | DATE | APPO |



| TEMPERATURE RANGE | OUTPUT VOLTAGE (SEE NOTE 1) | DC RESISTANCE AT 75°F | INDUCTANCE AT 1KHZ | OUTPUT LEADS (SEE NOTE 2)   | INSUL. RESISTANCE AT 500 VDC     | NET WEIGHT |
|-------------------|-----------------------------|-----------------------|--------------------|-----------------------------|----------------------------------|------------|
| -65°F TO +225°F   | 40 - 65 V p-p               | 80 - 110 OHMS         | 30 MH NOM          | MATES WITH MS 3106A-10SL-4S | 100 MEGOHMS MIN. COIL TO HOUSING |            |

**NOTES:**

- TESTED AT 1000 INCHES/SECOND WITH A 20 PITCH, 30 TOOTH GEAR, 0.005" CLEARANCE AND 100,000 OHM LOAD SHUNTED BY 250 PF.
- WITH APPROACH OF FERROUS METAL, PIN "B" IS POSITIVE WITH RESPECT TO PIN "A".

**CONSTRUCTION:**

HOUSING - 303 STAINLESS STEEL  
 POLE PIECE - 416 STAINLESS STEEL  
 POTTING - EPOXY RESIN

DO NOT SCALE THIS DRAWING

|   |   |   |
|---|---|---|
| UNLESS OTHERWISE SPECIFIED<br>DIMENSIONS ARE IN INCHES<br>TOLERANCES ARE<br>FRACT. DEC. ANGLES<br>$\pm 1/64$ .XXX $\pm .006$ $\pm 1/2^\circ$<br>.XX $\pm .01$ | <b>DYNALCO® CORPORATION</b>                   |   |
|   | FORT LAUDERDALE, FLORIDA                      |   |
|   | DRW BY K. Dalgle<br>APPROVED <i>L.O. C...</i> | DATE<br>5-28-86<br>5/28/86                  |
| <b>MATERIAL:</b><br>P/L A8006627  |   | <b>TITLE</b><br>MAGNETIC PICKUP MODEL M 320 |
| <b>FINISH:</b>  | SCALE<br>A                                    | DRAWING NUMBER<br>8000320                   |