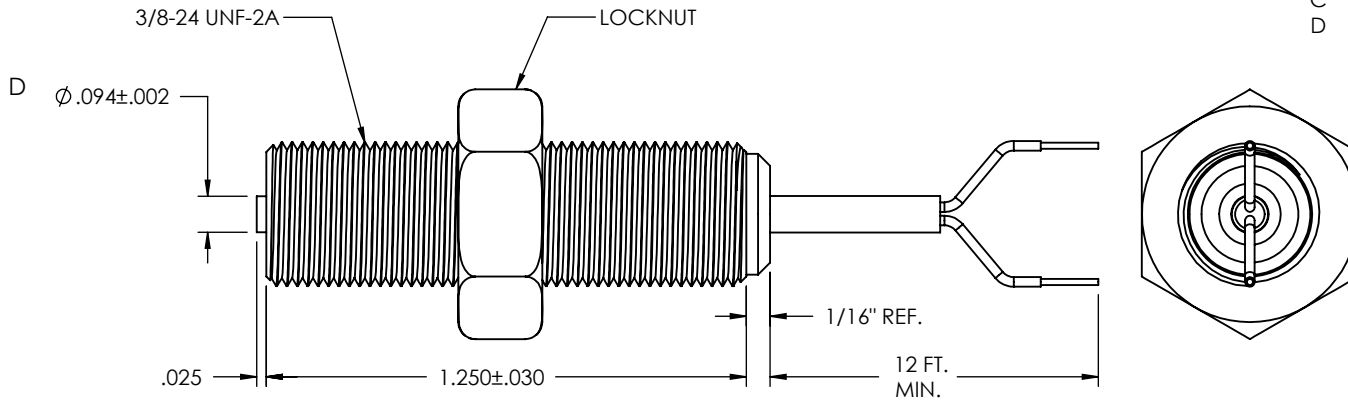


REV	ECN	REVISION RECORD	DATE	DR	CK
A	1064	CHNG LEAD WIRES TO SHLD CABLE	11-02-88		LOC
B		TEFLON CABLE WAS PVC CABLE	03-21-97		LOC
C	8794	REDRAW IN CAD	10-25-13	PF	MG
D	10140	WIRE LENGTH UNIT CHANGED TO FT.	06-09-16	PV	JR



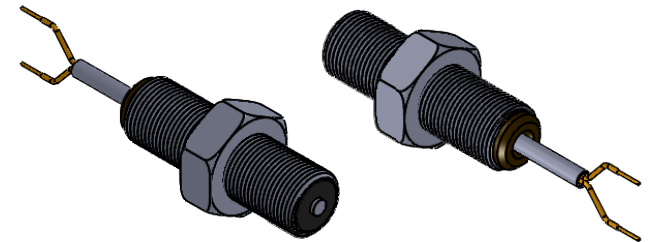
C

TEMPERATURE RANGE	OUTPUT VOLTAGE PEAK TO PEAK	DC RESISTANCE OHMS	INDUCTANCE MILLIHENRYS	OUTPUT CONNECTION	INSULATION RESISTANCE	NET WEIGHT
-65°F TO +225°F	60-90 VOLTS (SEE NOTE 1)	390-530 AT 75 °F	112 NOM.	SHIELDED CABLE TEFLON AWG # 26	100 MEGOHMS MIN. AT 500 VDC, COIL TO HOUSING	3.2 OZ. AVG.

B

NOTES:

- TESTED AT 1000 INCHES/SECOND WITH A 20 PITCH, 30 TOOTH GEAR, 0.005" CLEARANCE AND 100,000 OHM LOAD SHUNTED BY 250 MMF.
- WITH APPROACH OF FERROUS METAL, WHITE LEAD IS POSITIVE WITH RESPECT TO BLACK LEAD.



A

CONSTRUCTION:

- HOUSING - 303 STAINLESS STEEL
- POLE PIECE - 416 STAINLESS STEEL
- POTTING - EPOXY RESIN