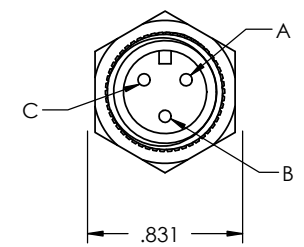
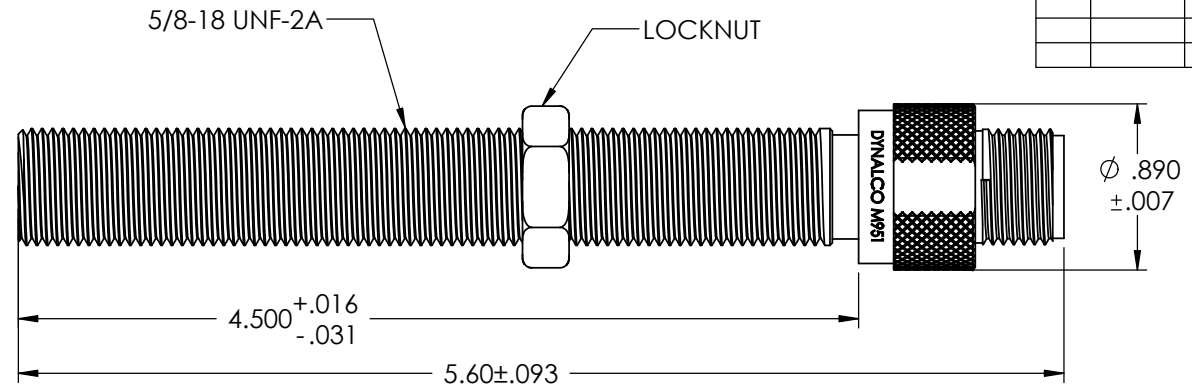


REV	ECN	REVISION RECORD	DATE	DR	CK
A	9XXX	INITIAL RELEASE	04/25/14	PF	BR



SPECIFICATIONS:

- POWER SUPPLY: 8 TO 32VDC.
- SUPPLY CURRENT: 30 mA MAXIMUM
- OPERATING TEMPERATURE: -30 F TO +250 F (-35 C to 125 C)
- SENSED FREQUENCY: 0 TO 20 KHZ
- OUTPUT VOLTAGE: SQUARE WAVE.
- LOGIC 0: WHEN NEAR FERROUS MATERIAL, ACTIVATES SENSOR.
* +0.5V AT ≤ 50mA.
- LOGIC 1: WHEN NO FERROUS MATERIAL PRESENT
* FOR $V_{in} \leq 24V$ USE A PULL UP RESISTOR $\geq 1K\Omega$
* FOR $V_{in} \leq 16V$ USE A PULL UP RESISTOR $\geq 330\Omega$
- INSULATION RESISTANCE: 100 MEGAohm MIN. AT 50 VDC (COMMON TO HOUSING)
- HOUSING: 303 STAINLESS STEEL, BLIND END.

ELECTRICAL CONNECTIONS	
PIN A	COMMON
PIN B	POWER SUPPLY
PIN C	OUTPUT



www.mod-tronic.com | sales@mod-tronic.com | 1-800-794-5883

UNLESS OTHERWISE SPECIFIED

DIMENSIONS ARE IN INCHES
DIMENSIONAL TOLERANCES:
FRACTIONAL ±1/64
ANGULAR: ± 1/2°
XX ±0.010
XXX ±0.005

THIRD ANGLE PROJECTION

DYNALCO

MODEL: M951 DRAWN: PF

DATE: 04/04/14 PATH: N\PROD\PICKUPS\M951 APPROVED: HM

MATERIAL: TITLE: PICKUP, HALL EFFECT, MODEL M951

FINISH: SIZE: A DWG. NO. 800-0951 REV: A

DO NOT SCALE DRAWING SCALE 1:1 WEIGHT SHEET 1 OF 1