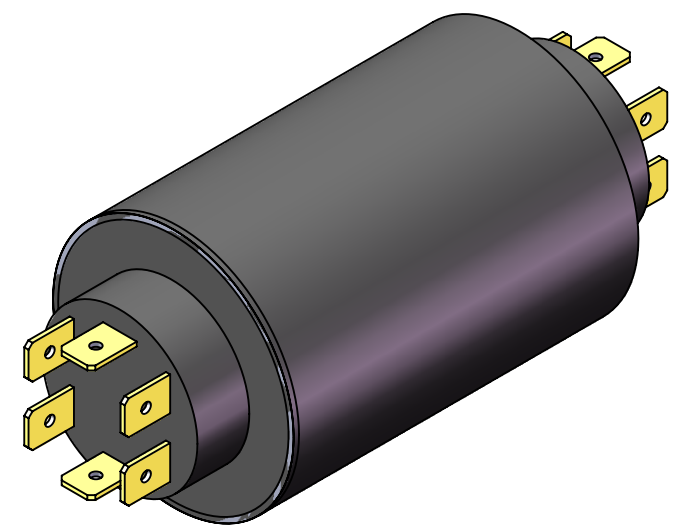
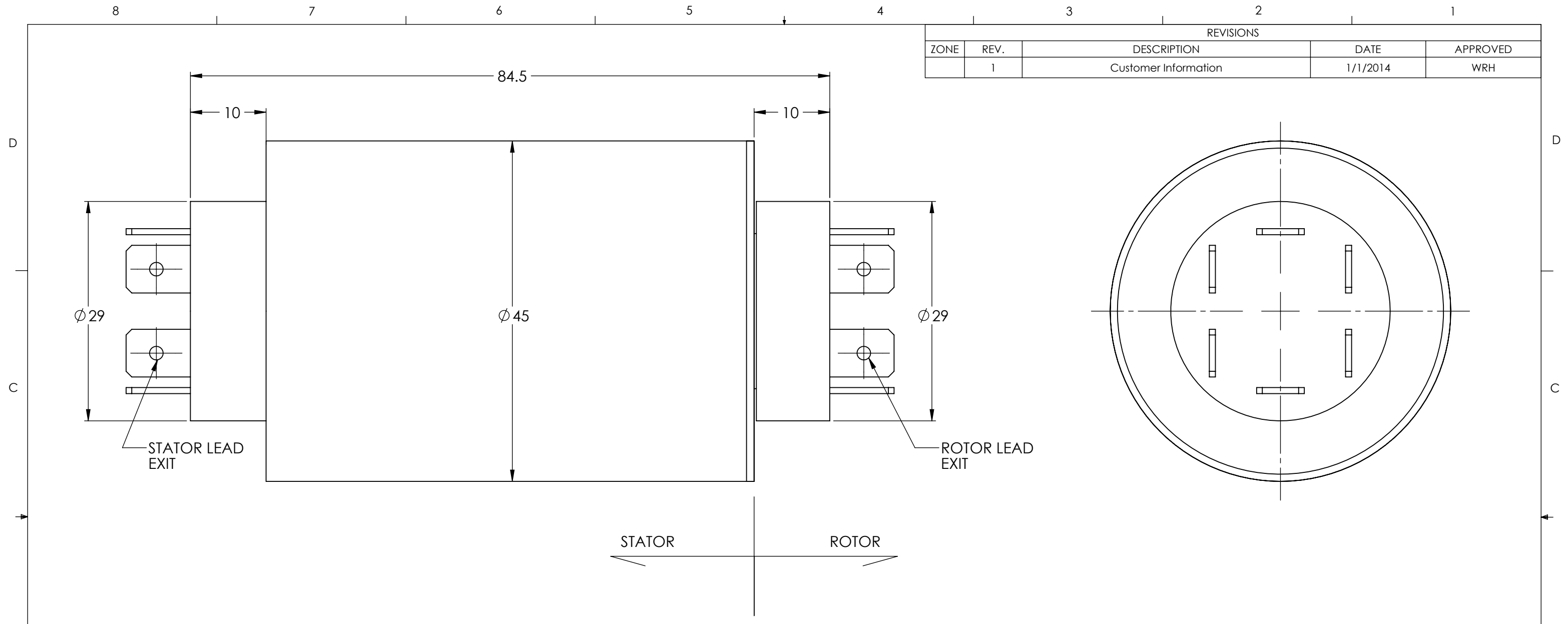


REVISIONS				
ZONE	REV.	DESCRIPTION	DATE	APPROVED
	1	Customer Information	1/1/2014	WRH



TECHNICAL DATA	
NUMBER OF CIRCUITS	6
RATED VOLTAGE	240 VAC/VDC
DIELECTRIC STRENGTH	500VAC@50Hz, 60s
RATED CURRENT	20A/RING
NOMINAL SPEED	0-400 RPM
INSULATION RESISTANCE	1000 MΩ/500VDC
DYNAMIC CONTACT RESISTANCE	<10 mΩ
CONTACT MATERIAL SURFACE	PRECIOUS METALS
TEMPERATURE	-20°C to + 80°C
BEARINGS	MINIATURE, PRECISION STEEL BEARINGS
HOUSING	ABS PLASTIC
PROTECTION	IP51

www.mod-tronic.com | sales@mod-tronic.com | 1-800-794-5883

UNLESS OTHERWISE SPECIFIED: DRAWING SYMBOLS & TOLERANCES PER ANSI Y14.5 DIMENSIONS ARE METRIC TOLERANCES: DECIMALS LINEAR ANGULAR .X ±0.2 ±0.5DEG .XX ±0.02 ±0.2DEG .XXX ±0.005 ±0.01DEG	TITLE: Slip Ring		
	MOD-TRONIC INSTRUMENTS LIMITED		
INTERPRET GEOMETRIC TOLERANCING PER: ANSI Y14.5	SIZE B	PRT. NO. MT6-20A	REV 1
MATERIAL: SEE CHART	SCALE: 2:1		SHEET 1 OF 1
FINISH: CLEAN	DRAWN: MRJ 1/7/2014		