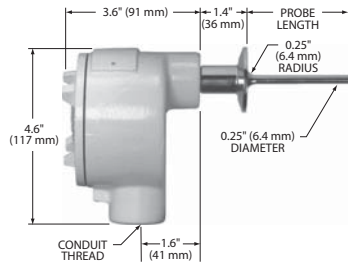


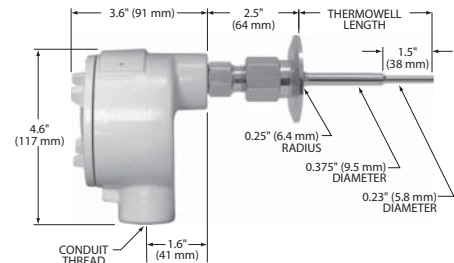
Sanitary RTD Assemblies



CH328 EPOXY-COATED ALUMINUM HEAD SHOWN.
SEE PAGES 4-2 FOR OTHER MODELS.
- CAST IRON: MODEL CH103
- POLYPROPYLENE: MODEL CH366;
- STAINLESS STEEL: MODEL CH335, CH360



PROBE ASSEMBLY



THERMOWELL ASSEMBLY

Overview

These assemblies include a connection head for terminating RTD leads to external wiring. The fast-response thermowell assembly lets you remove the RTD probe without breaking into process lines. Cases and thermowells, made of polished 316 stainless steel, are free of cracks and crevices that might shelter bacteria.

Specifications

Sensing element: Platinum RTD, 100 $\Omega \pm 0.1\%$ at 0°C, TCR = 0.00385 $\Omega/\Omega/^\circ\text{C}$ (Meets EN60751, Class B).

Temperature range: -100 to 200°C (-148 to 392°F).

Material:

Probe: 316 stainless steel.

Spring-loaded holder on thermowell version: 300 series stainless steel.

Finish:

Standard: #4 finish per 3-A standard 74-02, 32 microinches max. Pharmaceutical (optional): Polished to mirror finish and passivated. 10 microinches typical.

Pressure rating: 500 psi (34.5 bar).

Leadwires: Polyimide insulated leads, 4" (102 mm) long.

Time constant:

Probe assembly: 2 seconds.

Thermowell assembly: 4 seconds.

Self-heating: Typical value in moving water.

Probe assembly: 50 mW/°C

Thermowell assembly: 25 mW/°C.

Insulation resistance:

Single element probes: 1000 megohms min. at 500 VDC, leads to case.

Dual element probes: 100 megohms min. at 100 VDC, between elements and leads to case.

Temperature Transmitters

Minco's Temptran™ transmitters provide a 4 to 20 mA signal or HART® Protocol that can be sent over long distances with a simple 2-wire system. See Section 4 for complete temperature transmitter specifications.

Contact Minco if transmitter is required.

Specification and order options

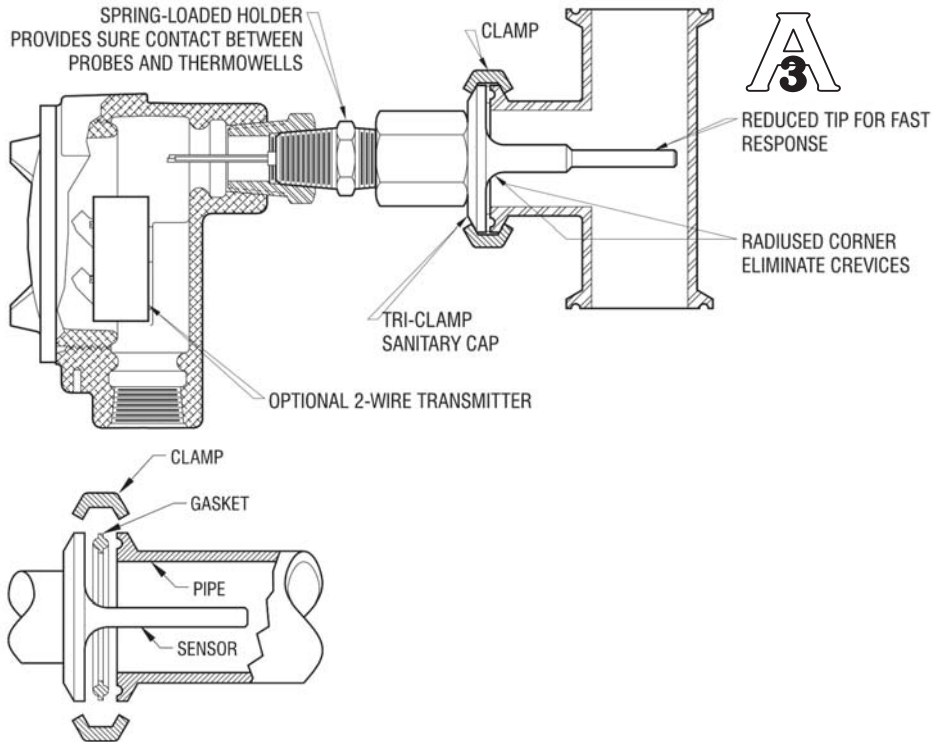
AS5000PD	Model number: Probe assembly: AS5010PD: Single element AS5012PD: Dual element Thermowell assembly: AS5000PD: Single element AS5002PD: Dual element
Z	Number of leads per element: Y = 2 leads Z = 3 leads
50	Probe or thermowell length in 0.1" increments: Standard lengths: 30 (3.0"), 40 (4.0"), 50 (5.0")
TC	Sanitary cap style: TC = Tri-Clamp®
15	Nominal diameter: 10 = 1.0" 15 = 1.5" 20 = 2.0"
E	Connection head: C = Cast iron E = Epoxy coated alum. N = White polypropylene S = Stainless steel (CH335) SS = Stainless steel (CH360)
3	Conduit thread: 3 = 1/2 - 14 NPT 4 = 3/4 - 14 NPT (N/A with N or S connection heads)
S	Case finish: S = Standard finish P = Pharmaceutical finish
AS5000PDZ50TC15E3S = Sample part number	

▼ = STANDARD OPTIONS

Specifications subject to change

Installation and Accessories

Installation



Accessories

Tri-Clamp fittings, manufactured by Tri-Clover, consist of two identical pipe faces with a gasket between them. A hinged clamp holds the two flanges together.

Pipe diameter	Clamp part #
1.5"	AC101656
2.0"	AC101657



Clamp for sanitary fitting

▼ = STANDARD OPTIONS
Specifications subject to change