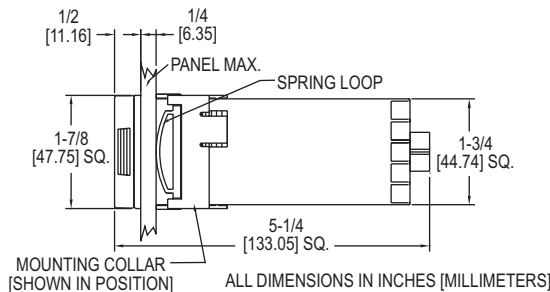


# LIMIT CONTROL

FM Approved, Large Dual Display, Universal Input



**Panel Cutout 1.77" + 0.02" [45 mm + 0.6 mm] Square**

Panel Meters/  
Indicators

The **Series 16L Limit Control** offers FM approved limit control with universal input, single set point or dual set point control.

**FEATURES/BENEFITS**

- Remote or integral reset button
- Peak and valley temperature indication
- Open sensor protection

**APPLICATIONS**

- Gas fired heater limit control

MODEL CHART		
Model	Output A	Output B
16L2030	N.O. relay	None
16L2034	N.O. relay	N.C. relay

**Note:** For other configurations, see website

ACCESSORIES	
Model	Description
A-600	R/C snubber

SPECIFICATIONS	
<b>Selectable Inputs:</b> 10 thermocouple, 4 RTD, DC voltage, or DC current selectable.	<b>Power Consumption:</b> 5 VA maximum.
<b>Display:</b> Two 4 digit, 7 segment 0.3" (7.62 mm) high LEDs.	<b>Temperature Limits:</b> 14 to 131°F (-10 to 55°C).
<b>Accuracy:</b> ±0.25% of span, ±1 least significant digit.	<b>Memory Backup:</b> Nonvolatile memory. No batteries required.
<b>Power Requirements:</b> 100 to 240 VAC, nominal, +10 -15%, 50 to 400 Hz. single phase; 132 to 240 VDC, nominal, +10 -20%.	<b>Output:</b> Relay: SPST, 3 A @ 240 VAC resistive; 1.5 A @ 240 VAC inductive.
	<b>Weight:</b> 8 oz (227 g).
	<b>Front Panel Rating:</b> NEMA 4X (IP66).
	<b>Agency Approvals:</b> FM, cULus.

OPTIONS	
To order add suffix:	Description
-934	Process signal output, isolated 0 to 20 mADC
-936	Process signal output, isolated 0 to 10 VDC
-992	RS-RS-485 serial communications
-993	RS-RS-232 serial communications